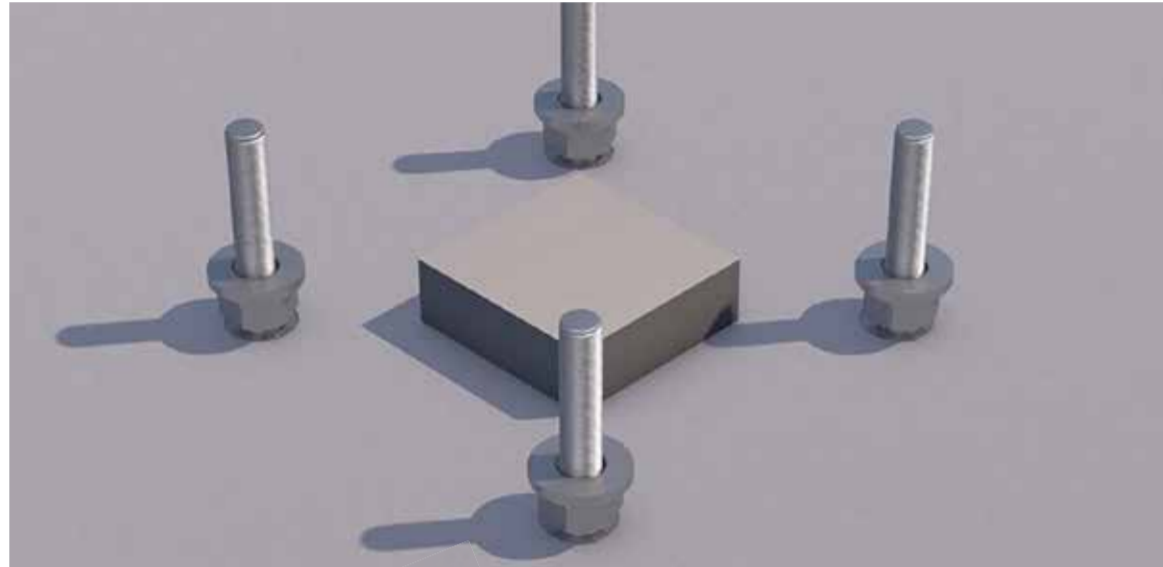


Column assembly

1) Necessary preparations



Height-adjusted nuts and washers – exact alignment must be ensured! Optionally, steel plates can also be used for alignment.

Slugging ring spanner in a suitable size



PCC16	SW24
PCC20	SW30
PCC24	SW36
PCC27	SW41
PCC30-1	SW46
PCC30-2	SW46
PCC36	SW55
PCC39-1	SW60
PCC39-2	SW60

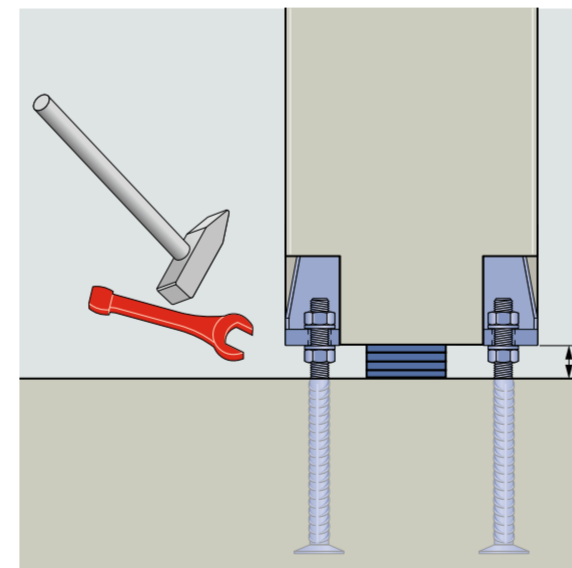
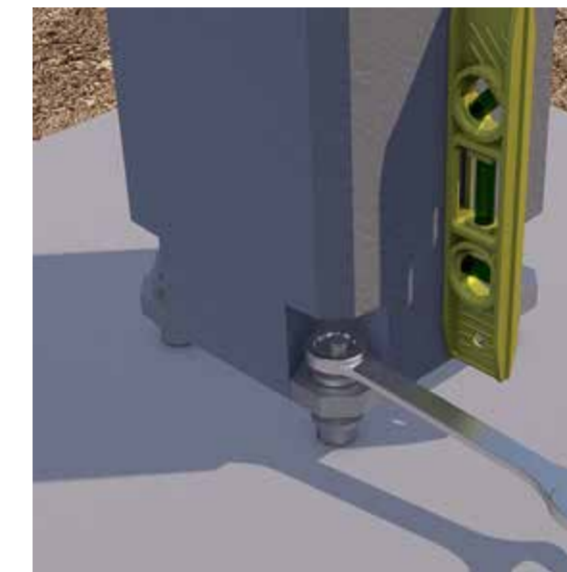
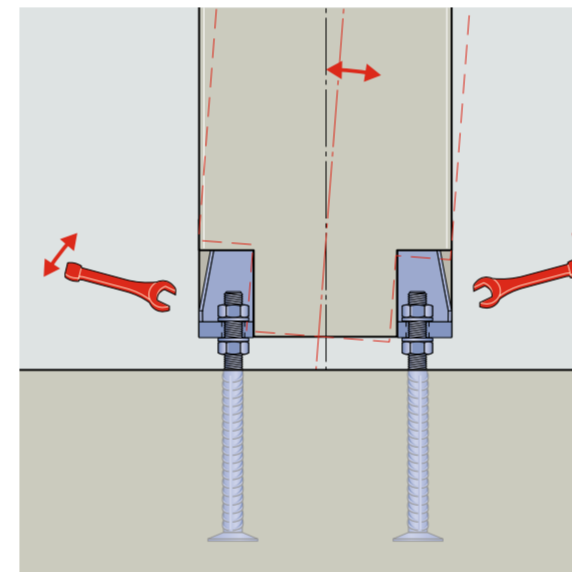
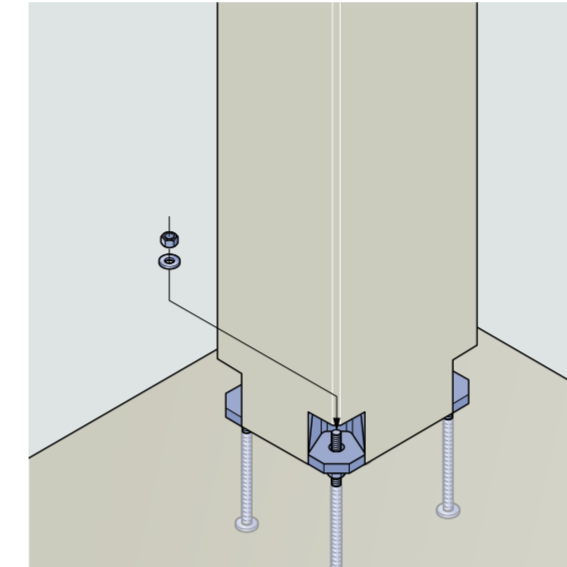
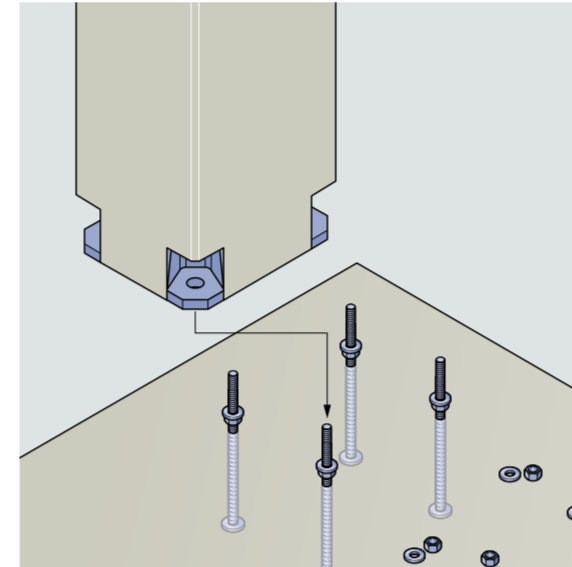
2 kg hammer



Levelling device and theodolite



2) Positioning the column



! Tighten nuts with an impact wrench – 10 hits with a 2 kg hammer

3) Grouting the insert area



Use a grout that meets the following minimum requirements:

- Largest grain 5 mm
- Non-flammable A1
- Swelling
- Minimum strength higher than column concrete

